

State of Wyoming Corner Record

(in compliance with the CORNER PERPETUATION AND FILING ACT, Wyoming Statutes, 1977, Section 36-11-101, et. seq., and the Rules and Regulations of the Board of Registration for Professional Engineers and Professional Land Surveyors)

Reverse side of this form may be used if more space is needed.

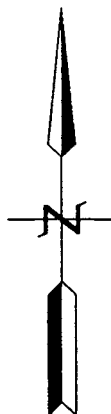
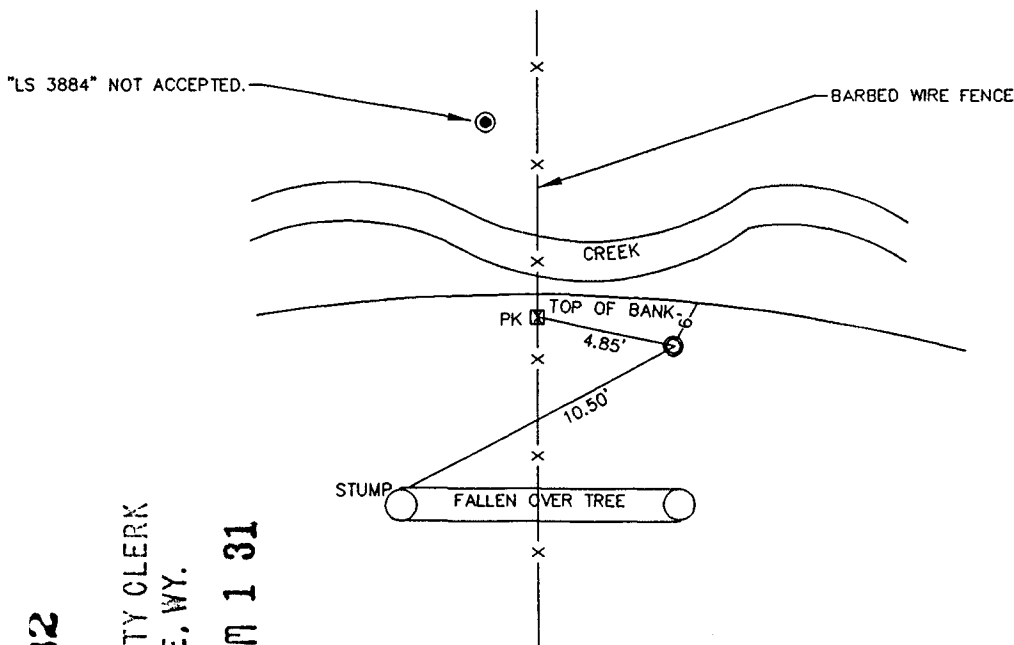
Record of original survey and citation of source of historical information (if corner is lost or obliterated). Description of corner monumentation evidence found and/or monument and accessories established to perpetuate the location of this corner. Sketch of relative location of monument, accessories, and reference points with course and distance to adjacent corner(s) (if determined in this survey). Method and rationale for reestablishment of lost or obliterated corner.

RECORD: SET A RED SANDSTONE 15"X8"X6" FOR 1/4 SECTION CORNER.

MONUMENT FOUND: FOUND A 3 1/4" ALUMINUM CAP ON REBAR, STAMPED "SURVEY MARKER", "PLS 3884", "DW ELGIN". NOT ACCEPTED.

MONUMENT SET: SET 5/8"X24" REBAR WITH 2 1/2" ALUMINUM CAP, PROJECTING 5" ABOVE GROUND, SURROUNDED BY A COLLAR OF STONE. BY SINGLE PROPORTION, WHICH FITS ORIGINAL TOPO CALLS TO BE SOUTH OF THE CREEK.

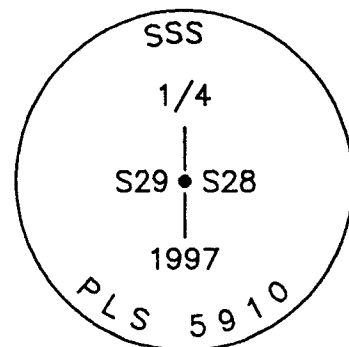
REFERENCES: SET PK'S FOR REFERENCES.



221032

LARAMIE COUNTY CLERK
CHEYENNE, WY.

'98 MAR 23 PM 1 31



Date of Field Work: 9-30-97

Office Reference: 97057

CROSS INDEX DIAGRAM

A	2	3	4	5	6	7	8	9	10	11	12	13	14	15	16	17	18	19	20	21	22	23	24	25	
B																									
C	6		5		4		3		2		1														
D																									
E																									
F																									
G	7		8		9		10		11		12														
H																									
J																									
K																									
L	18		17		16		15		14		13														
M																									
N																									
O																									
P	19		20		21		22		23		24														
Q																									
R																									
S																									
T	30		29		28		27		26		25														
U																									
V																									
W																									
X	31		32		33		34		35		36														
Y																									
Z																									

Firm/Agency, Address

STEIL SURVEYING SERVICES, LLC.

1102 WEST 19th STREET

CHEYENNE WY 82001

Telephone Number: (307) 634-7273

This corner record was prepared by me or under my direction and supervision.

SEAL & SIGNATURE



BOOK 1476

Corner Name: 1/4 CORNER Section: 29 T15N R63W; 6TH P.M. Cross-Index No.: 9-T